



This Service Information bulletins supersedes S.I. 72 03 99 **dated June 2002**.

NEW designates changes to this revision

SUBJECT

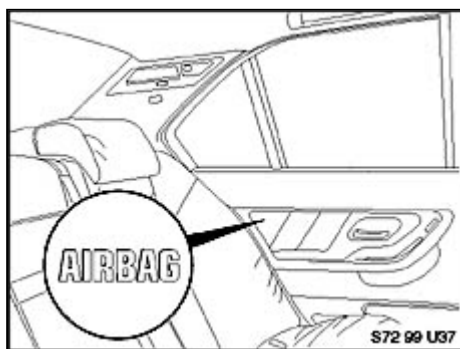
Rear Airbag Activation/Deactivation Procedure

MODEL

E38, E39, E46, E53, E65, E66, vehicles with option 261 (rear seat side-impact airbag)

SITUATION

Accident research shows that the safest place for children in an automobile is in the rear seat. However, a child sitting in the rear seat and not properly restrained may place his or her head on or near the side airbag. It may be difficult for a driver to ensure that children in the rear seat will remain properly positioned at all times and not place their heads on or near the side airbag. BMW of North America, LLC recommends that the customer should deactivate the rear-seat side airbags if they plan to transport children in the rear seat of their BMW.



Although the rear side door airbags are deactivated, the rear side door air bag equipped vehicles will have "AIRBAG" stamped on the door trim panel as illustrated.

Note: This situation is not critical for the HPS. Therefore, BMW does not recommend the deactivation of the HPS.

The following is the rear airbag status at the time of vehicle production:

| Vehicle Type | Rear Door Airbag Status (production) | Rear HPS status (production) |
|----------------------------|--------------------------------------|------------------------------|
| E38 (prod. before 3/99) | Activated | Not Installed |
| E38 (prod. 3/99 - 5/99) | Activated | Activated |
| E38 (prod. 6/99 and later) | Deactivated | Activated |
| E39 (prod. before 6/99) | Activated | Not Installed |
| E39 (prod. 6/99 and later) | Deactivated | Not Installed |

later)

| | | |
|-----------------------------------|-------------|-------------------------------|
| E46 (prod. before 6/99) | Activated | Not Installed |
| E46 (prod. 6/99 and later) | Deactivated | Not Installed |
| E53 | Deactivated | Not Installed |
| E65 | Deactivated | Activated (part of front HPS) |

CORRECTION

Prior to new car delivery, the customer must be informed that the rear side airbags are deactivated. BMW of North America, LLC will provide rear-door side-airbag deactivation and reactivation free of charge to the customer, through all BMW centers, on a customer request basis only. Rear HPS, if available, will remain active, unless separate deactivation of the rear HPS system is requested by the customer and performed by a BMW center.

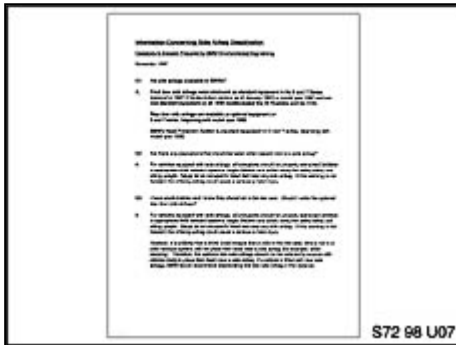
(Important: Although the rear HPS can be deactivated, BMW NA does not recommend performing this procedure. Therefore, the customer will be responsible for paying any cost associated with the deactivation of the rear HPS.)

PROCEDURE

Reactivate/Deactivate the rear door side airbags: **Section A**

Reactivate/Deactivate all rear airbag systems together: **Section B**

Section A - To ACTIVATE or DEACTIVATE the rear door side airbags:



1. Information for Side Airbags
Provide the customer with the form "Information Concerning Side Airbag Activation/ Deactivation" prior to the vehicle delivery



2. Authorization from the Customer prior to activation or deactivation:
Obtain the necessary authorization(**from the customer**) for airbag activation/deactivation by having the customer complete the "Authorization to Activate/Deactivate an Air Bag" form. This form must be completed by the customer before the activation / deactivation is performed.

3. Order the Labels: Refer to Parts Information in this SI. (An initial supply of labels and forms will be automatically shipped to all BMW centers.) All the proper labels should be affixed before the customer takes delivery of the vehicle.

4. Once the above components are obtained, contact the customer and arrange the appointment.

Note: With the exception of E65, a code is not required in order to reactivate/deactivate the rear door side airbags.

5. Documentation

It is important that all documentation be completed and copies provided as follows:

a) **Customer:**

"Authorization to Activate/Deactivate an Air Bag" White copy

b) **BMWNA:**

"Authorization to Activate/Deactivate an Air Bag" Pink copy

"Airbag Deactivation/Reactivation Request (Part 2 must be completed)

Forms must be faxed to BMWNA at: (201)930-8424

Or

mailed to BMWNA at:

BMW of North America, LLC

BMW Plaza,

Montvale, NJ 07645

Attn: Quality and Service Engineering

Warning!: Comply with airbag safety precautions! Incorrect handling can activate airbag and result in injury.

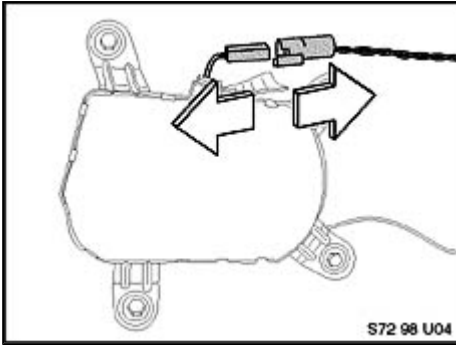
NEW To Activate/ Deactivate the rear door side airbag:

6. Warning! Disconnect the battery and cover the negative cable terminal. Failure to disconnect the battery may result in an airbag deployment.

Rear Door Side Airbag Deactivation/reactivation only:

7 Remove the rear door panels (refer to work instruction RA 51 42 000)

8. **Disconnect (reconnect)** the main connector to both



rear side airbags and secure the wires with small cable ties. (Connector may look different from pictured here).

9. Install the rear door panel.

10. **Coding:** After the rear door airbag has been disconnected (reconnected if activating) the airbag module must be recoded.

For all vehicles except E65:

- Connect DIS or MoDiC to the vehicle and turn the ignition ON to the number 2 position
- Select "Encoding ZCS"
- Identify vehicle
- Select "Conversions"
- Select "Airbag"
- Select "Airbag components"
- Select the action to be performed:
 - "Activation" or
 - "Deactivation"
- Select "Side airbag, rear left"
- Select "Yes" to start automatic coding

If coding is completed successfully, the message "Coding is completed" is displayed.

Note: The Central Coding Key will be changed.

The same procedure has to be repeated for the right side airbag:

- Select "Encoding ZCS"
- Identify vehicle
- Select "Conversions"

- Select "Airbag"
- Select "Airbag components"
- Select the action to be performed:
 - "Activation" or
 - "Deactivation"
- Select "Side airbag, rear right"
- Select "Yes" to start automatic coding

If coding is completed successfully, the message "Coding is completed" is displayed.

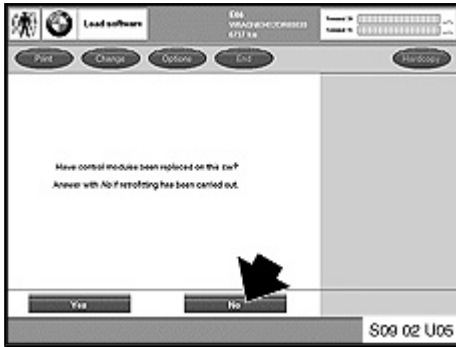
Note: The Central Coding Key will be changed.

For E65 vehicles:

- Connect both rear side air bags
- Connect an approved battery charger to the vehicle
- Please make sure CIP V **NEW** 2.0 or later is loaded into DISplus/GT1
- Switch KL15 on.
- Using DISplus/GT1, and with the diagnostic head connected to the vehicle, select Coding/Programming.
- **NEW** Select option "E65/E66/E85", then press the forward arrow. The initial CIP screen is then displayed.
- **NEW** Press "E65/E66" at the screen with the text "Model series selection:".



- Press "Load SW" at the screen with the text "Program SELECTION: Load software, Car & Key Memory (CKM)".



- Answer **"No"** at the screen with the text *"Have control modules been replaced on this car? Answer with No if retrofitting has been carried out."*

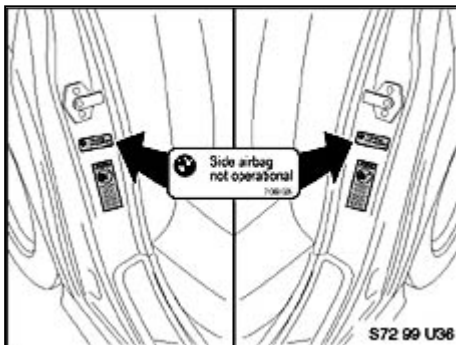
- Press **"Cancel Update"** at the screen with the title *"Status report"*.
- Press **"Retrofits"** at the screen with the text *"Select control module to be processed"*. Do not mark any control modules.
- Select **"Airbag (de)activation"**
- Mark the appropriate airbag to be (de)activated at the screen with the text *"Activate or deactivate airbag"*
- Select **"activate/deactivate"** at the screen *"Select subfunction for airbag or cancel with arrow in navigation column"*

NEW Note: When activating airbags on E65 for the first time, the only option shown on DISplus/GT1 will be "Deactivate" even though the airbags are currently deactivated. Select "Deactivate" and allow the process to complete. Then reselect "airbag de/activation". The menu will now show "Activate" as an option. Select "Activate" then continue.

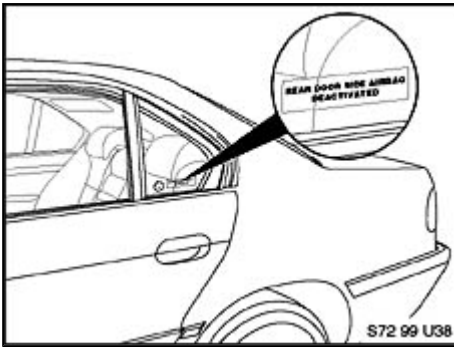
- Press **"Continue"** at the screen with the text *"Activation/deactivation of airbag components. The airbag control unit is being recoded"*.

11. After coding has been completed, perform a "quick delete" of all faults and then a functional check of the airbag system.

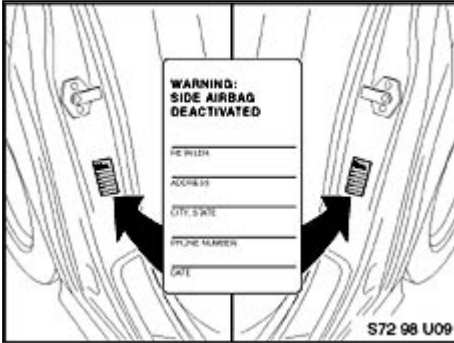
NEW 12. Remove the existing C-Pillar airbag warning labels and affix the new warning labels. (Refer to the chart following paragraph 24)



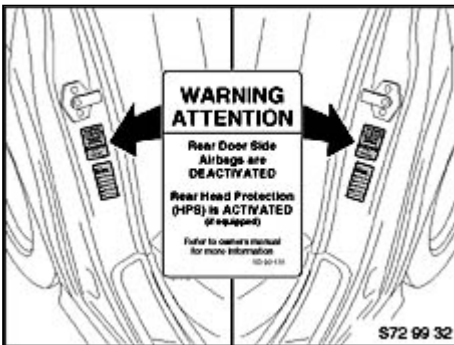
13. **BMW center activated rear side airbag:**
For vehicles produced 6/99 and later: Remove the orange warning label "Side Airbag not operational" from the left and right C-pillars. Leave the warning label (72 12 8 240 204) attached!



14. Remove the clear warning label "Rear Door Side Airbag Deactivated" (SD92-133) from the left and right rear quarter windows.



15. **BMW center deactivated** rear side door airbag: **Remove** all the existing C pillar labels and then **affix** the warning label "Warning: Side Airbag Deactivated" (SD92-099) **and** "Warning Rear door side airbags are Deactivated. Rear Head Protection is activated" (SD92-131) to left and right C-pillars. Refer to illustrations.

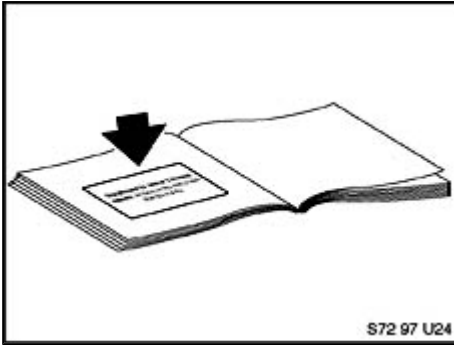


Warning label SD92-131



16. Affix the clear warning label "Rear Door Side Airbag Deactivated" " (SD92-133) onto the left and right rear quarter windows.

17. For **BMW center deactivation**, affix the "Supplement to Owner's Manual Warning: Airbag(s) in this vehicle have been **deactivated**" (SD92-100) label

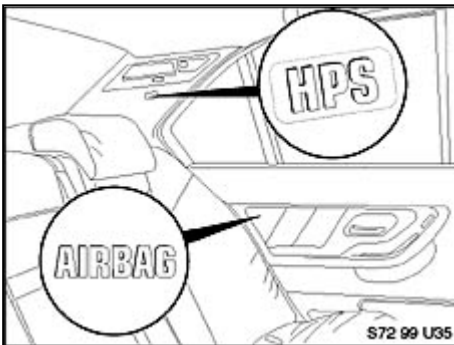


in the Owner's Handbook on inside cover.
For **BMW center activation**, affix the "Supplement to Owner's Manual Warning: Rear side airbags are **active**" (SD92-127) label in the Owner's Handbook on inside cover.

Section B - To deactivate/reactivate the complete rear HPS airbag system (Rear HPS equipped vehicles only)

This section is not applicable to E65 because the front and rear HPS are a single inflatable tubular structure (ITS). It is therefore impossible to deactivate the rear HPS.

Important: Although the rear HPS can be deactivated, BMW NA does not recommend performing this procedure. Therefore, the customer will be responsible for paying any cost associated with this procedure.



Rear side door air bag equipped vehicles will have "AIRBAG" stamped on the door trim panel as illustrated.

Vehicles with rear HPS will have "HPS" stamped on the C-pillar trim panel as illustrated.

Vehicles that are equipped with rear airbags can have the following combinations:

| Possible Set of Options | Available? | Code needed? |
|--|------------|--------------|
| Rear Door Airbag Deactivated / Rear HPS Activated (Factory setting as of 6/99) | Yes | no code |
| Rear Door Airbag Activated / Rear HPS Activated | Yes | no code |
| Rear Door Airbag Activated / Rear HPS Deactivated (Not recommended) | Yes | Yes |
| Rear Door Airbag Deactivated / Rear HPS Deactivated(Not recommended) | Yes | Yes |

1. Obtain the Code

Complete the "Deactivation/ Reactivation Request"